

FORD LEISURE RANGE



Falcon Overniter



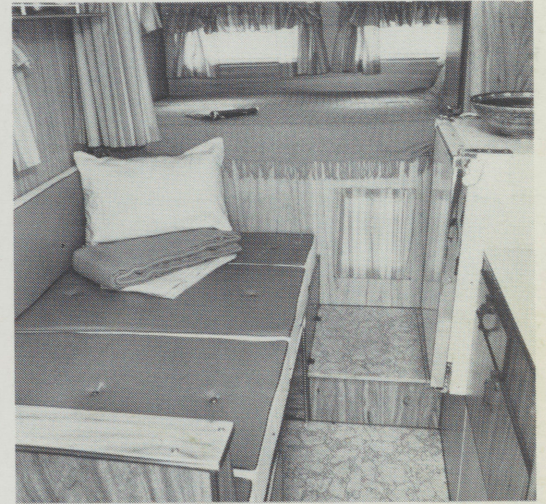
1975 MODEL



When your holiday's over—park your camper in the drive.



Your motel on wheels.



Lead a double life and love it!

Think of the possibilities. Your ute can be a workmate during the week and a playmate for the weekends and holidays. You can take a luxury motel room right away from the beaten track!

What's more, Overniter is the only ute that's built to take a camper . . . complete with large capacity radiator, heavy duty shock absorbers, tie down kit and heavy duty battery, and alternator. There's even a trailer wiring connection.

Look what you get with Ford Overniter

INSIDE Range—2 burner/griller L.P. gas. Frig.—3 cu. ft. Gas/Electric. Gas cylinder—20 lb. in safety ventilated compartment. Single regulator and fittings. Fire Extinguisher. Laminated table and bench tops. Fully decorated and furnished. Sleeps four in comfort. Sink bowl—12" x 10". Water tank—14 gal. polyethylene, external fill. Vinyl tile floor. 2 power points. 1 TV point.

OUTSIDE Baked acrylic aluminium body for durability and light weight. 6 windout louvre windows—all screened in fibreglass. Roof hatch ventilation. Flue for refrigerator and range. Wiring to 7 Pin Adaptor.

UNDERNEATH 4 mechanical jacks for easy mounting and removing. 4 turn buckles and chrome-plated "D" plates. Portable step.

FALCON 500 UTILITY: Engine: 302 V8. Transmission: 3-speed all synchro column change. Manual standard. 3-speed auto column, 4-speed floor shift and T-bar cruisomatic optional. Tyres: 7.75 x 14 x 4. Power front disc brakes. Heavy duty battery. Driving lights.



Vehicle illustrated with optional GS Rally Pack, and driving lights.